



DENSITY ISN'T “THAT BAD”

Robert Baldwin

Dover, NH

An aerial photograph of a residential property at 84 Silver Street, Dover. The property features a large, multi-story house with a grey roof and a blue accent on the front facade. A paved driveway leads to a parking area with several cars parked. To the left of the house is a large, leafless tree, and to the right is a smaller, green tree. The street is visible at the top of the image, with a yellow center line and white edge lines. The text "84 Silver Street, Dover" is overlaid in the center of the image.

84 Silver Street, Dover







BEFORE

276 Washington Street, Dover, New Hampshire



4 UNITS DOESN'T NEED TO LOOK LIKE 4 UNITS



Lois and Margaret Street, Rochester

"Smallish Houses"





3,000SQFT LOT | HOUSE 900SQFT





BANNER DRIVE DOVER



HOUSE 1400SQFT











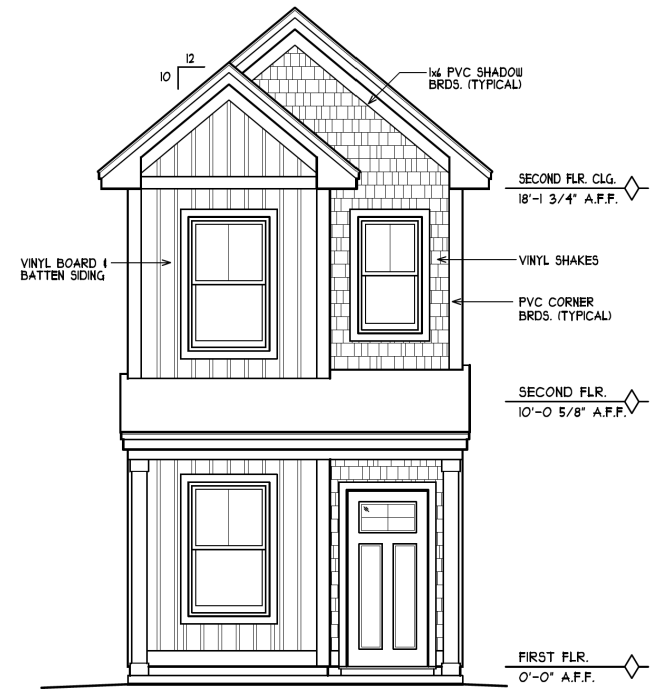








AUBURN STREET, DOVER



FRONT ELEVATION

SCALE: 1/4" = 1'-0"



THANK YOU

Robert Baldwin

Dover, NH